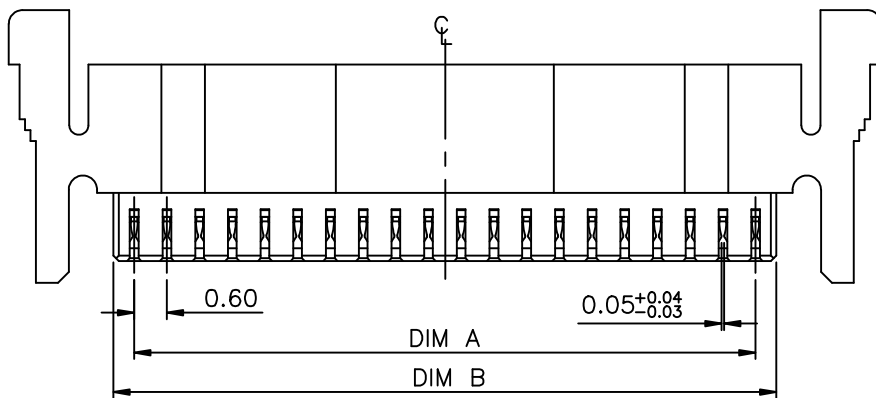


MATED CONDITION



NOTES:

1. MATERIAL:

- 1.1 HOUSING: THERMOPLASTIC, HIGH TEMP.,UL94V-0
- 1.2 CONTACT: COPPER ALLOY

2. FINISH:

2.1 CONTACT:

- 50u" MIN. NICKEL UNDERPLATING OVERALL.
- 1: GOLD FLASH PLATING.

3. SPEC. PLS. REFER TO PS-52205-XXXXX-XXX

4. PACKAGE PLS. REFER TO 52251-XXXXX-XXX-PCK

5. PART NUMBER

52251-XXX X X-XXX

CKTS

PACKING

1: TUBE

XXX	COLOR
001	NATURAL

PLATING

1:GOLD FLASH

CKT	DIM A	DIM B	DIM C	DIM D
20	11.4	12.16	15.0	16.0

QUALITY SYMBOLS

MAJOR

CRITICAL

GENERAL TOLERANCES ( UNLESS SPECIFIED )

X. ±0.5

.X ±0.25

.XX ±0.15

.XXX ±0.1

ANGLES ±2°

DRAWN BY	DATE
Xu, Bin	23/03/31
CHECKED BY	DATE
Xu, Zhi Yong	23/03/31
APPROVED BY	DATE
Xu, Zhi Yong	23/03/31
UNITS	
mm	
SCALE	1 : 1
SHEET NO.	1 OF 1

**ACES** ELECTRONICS

TITLE: 0.6mm Pitch WTB Conn.IDC Female.

SIZE: A4

RFQ NO.: N/A

REV: A

DWG NO.: 52251-XXXXX-XXX